

Customer :

customer

Customer part :

customer part

Comment :

Comment

S1=2.58

S2=3.74

Tmax=459

Tp S2=498.0

PI=0.41

HI=111

Sample =1642.60

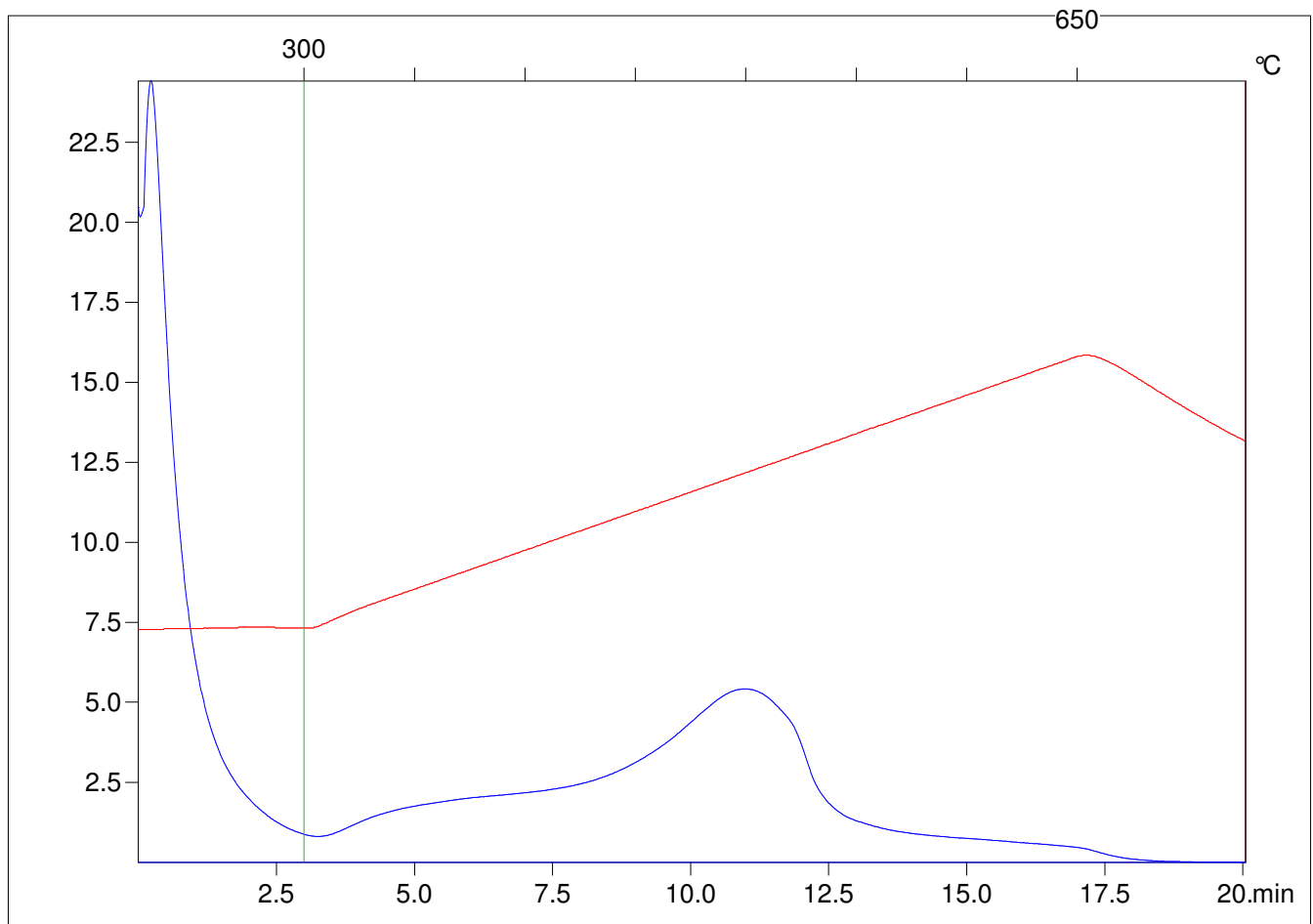
Method =Bulk Rock

Cycle=Basic

KFID(10\*9)=1444

Qty =70.8

TOC=3.36



C:\VINCI\PK1792\PK048.R00 : FID pyrolysis graphic

State

Pyro Status

Oxi Status